

PART-1 GENERAL

**MAXIMUM CEILING HEIGHT 8'-0"
MINIMUM CEILING HEIGHT 7'-6"**

1.01 DESCRIPTION

- A. Plastic compartment work includes the following:
 - 1. Ceiling Hung partitions.
- B. Furnish all labor and materials necessary for the completion of work in this section as shown on the contract drawings and specified herein.
- C. Work in this section shall include, but is not limited to:
 - 1. Toilet compartments.
 - 2. Hardware for toilet compartments and plastic partitions.
 - 3. Shop drawings and working drawings.
 - 4. Manufacturer's guarantee.
- D. Related work specified elsewhere shall include accessories and anchorage/blocking for attachment of compartments.

1.02 PRODUCTS

- A. Submit six sets of shop drawings and details for architect's approval.
- B. Colors shall be selected from the manufacturer's standard range of colors.
- C. Color and hardware samples shall be submitted for approval to the architect upon request.

PART-2 PRODUCTS

2.01 MANUFACTURER

- A. Toilet compartments to be supplied by Global Partitions, Eastanollee, GA 30538.

2.02 MATERIALS

- A. Doors, panels and pilasters to be 1" thick with homogeneous color throughout, constructed from high density polyethylene (HDPE) resins, which are, waterproof non-absorbent and have a self-lubricating surface that resists markings from pens, pencils and other writing instruments.

2.03 CONSTRUCTION

- A. Doors, panels and pilasters shall be 1" thick with uniformly machined edges.
- B. Doors and panels shall be 55" high and mounted at 14" above the finished floor. Door shall be mounted to the pilasters with a die cast zamac wraparound hinge.
- C. Pilasters shall be ceiling anchored and mounted to the panels and walls with a 54" long continuous aluminum bracket. Optional 54" long extruded PVC bracket is available. Pilasters shall include a mounting system comprised of 3/8" x 1" steel mounting bar attached to the pilaster in a GLOBAL PLUG LOC arrangement, having 3/8" steel-plated bolts secured to 1/8" thick semi cylindrical PLUG LOC imbedded within a contoured aperture transversely piercing the core. Each mounting bar shall be secured to the building structure with 3/8" steel-plated studs. A shoe shall conceal each ceiling mounting, having an internal cross section conforming to the pilaster. Shoe type 304 stainless steel #4 finish.
- D. Doors and panels to have an extruded aluminum heat sink strip attached to the lower edge.

2.04 HARDWARE (Note: Refer to the ORDER INFORMATION CONTRACT for the specific hardware to be supplied on your order.)

- A. Door hardware shall be as noted:
 - 1. Heavy-duty die cast zamac hinge shall have gravity-acting cams and are fabricated from a die cast Aluminum alloy with a brushed polish finish and wraparound flanges. The cam is constructed from a 3/4" diameter nylon rod and a 3/8" stainless steel pin. Hinges are through-bolted onto doors and pilasters using stainless steel, theft-resistant through bolts. Hinges are easily adjusted at the jobsite to a full close or partially open position, as required.
 - 2. Continuous wall brackets are 54" long and made of heavy-duty anodized extruded aluminum (6063-T5 alloy). Continuous wall brackets are pre-drilled with holes along the full length of the bracket. The bracket thickness shall be 1/8". Wall brackets are mounted with stainless steel, theft-resistant screws. Panels shall be attached with stainless steel, theft-resistant through bolts. The attachment of brackets to the adjacent wall construction shall be accomplished with #14 x 2 1/2" stainless steel, theft resistant screws and plastic anchors.
 - 3. Continuous wall brackets (optional) are 54" long and made of heavy-duty PVC. Continuous wall brackets are pre-drilled. Wall brackets are mounted with stainless steel, theft-resistant screws. The attachment of brackets to the adjacent wall construction shall be accomplished with #14 x 2 1/2" stainless steel theft resistant screws and plastic anchors.
- B. Plastic pilaster shoes shall be 5" high. Stainless steel pilaster shoes shall be 5" high with a #4 satin finish. Pilaster shoes are anchored to the pilaster with #10 stainless steel, theft-resistant screws.
- C. Slide latches shall be fabricated from a diecast zamac with a brushed polish chrome-plated finish and mounted to the door with stainless steel, theft-resistant through bolts.
- D. Strike and keepers shall be fabricated from a die cast zamac with a brushed polish chrome-plated finish. Keepers provide for emergency access into the stall by lifting up on the bottom of the door. Strikes and keepers shall be attached to the doors and pilasters with stainless steel through bolts.

PART-3 EXECUTION

3.01 PREPARATION

- A. Examine areas to receive toilet compartments for correct height and spacing of anchorage/blocking and plumbing fixtures that may affect installation of compartments. Report any discrepancies to the architect.
- B. Take complete and accurate measurements of complete toilet compartment locations.
- C. Start of work constitutes acceptance of job.

3.02 INSTALLATION

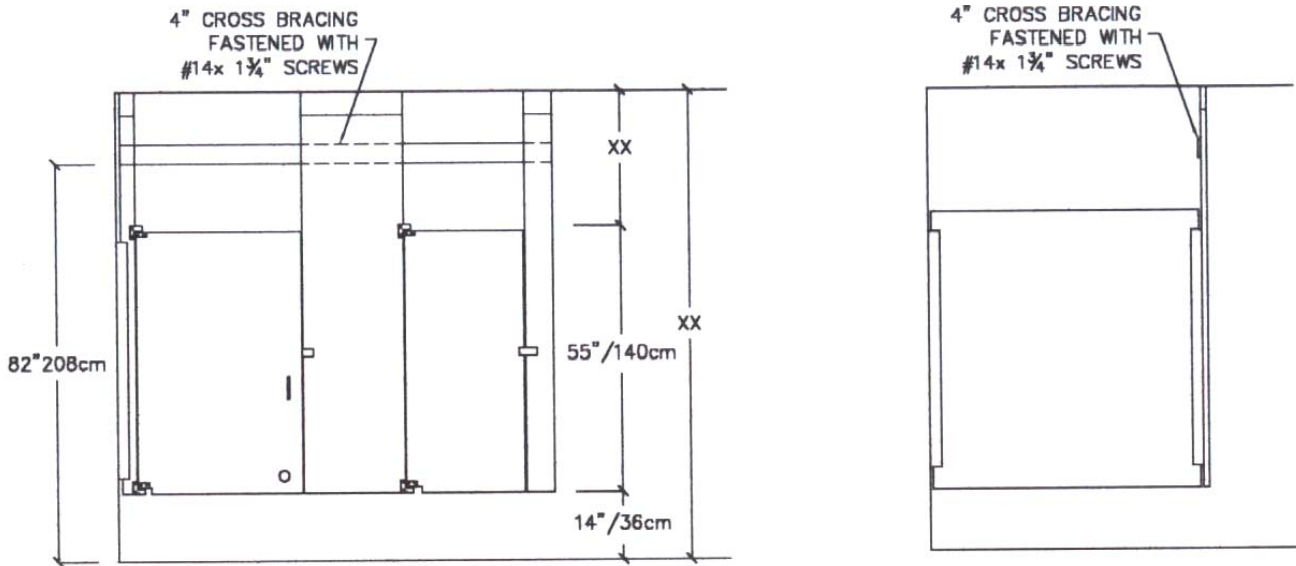
- A. Install compartments in a rigid, straight, plumb and level manner, with steel laid out as shown on the shop drawings and manufacturer's installation instructions.
- B. All doors and panels to be mounted at 14" above the finished floor.

3.04.1

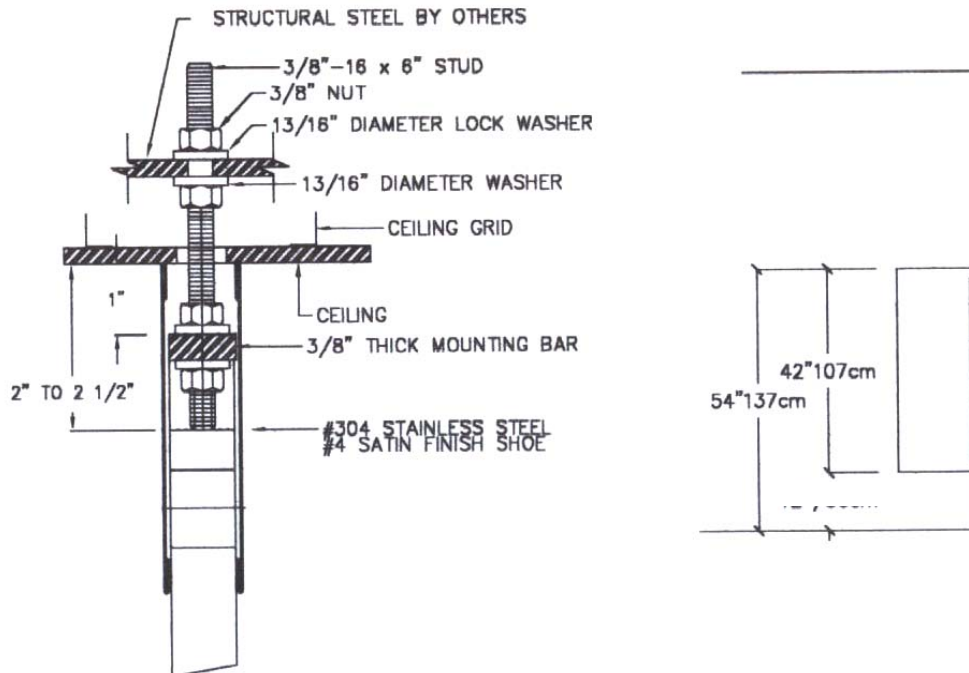
MAXIMUM CEILING HEIGHT 8'-0"
MINIMUM CEILING HEIGHT 7'-6"

- C. Clearance at vertical edges of door shall be uniform top to bottom.
 - D. No evidence of cutting, drilling and/or patching shall be visible on the finished work.
 - E. Finished surfaces shall be cleaned after installation and be left free of all imperfections.
- 3.03 WARRANTY**

- A. GLOBAL Partitions guarantees its plastic against breakage, corrosion and delamination for 15 years from the date of receipt by the customer. If materials are found defective during that period for the reasons listed above, the materials will be replaced free of charge. No credits or allowances will be issued for any labor or expenses relating to the replacement of components covered under the warranty plan. All such expenses are to be borne by the buyer.



TYPICAL CEILING ANCHORED POLYMER VAULT HINGE ELEVATIONS



CEILING HUNG PILASTERS

3.04.2